

PASTEURDISK AND STERILDISK

STANDARD, PROBE, JUMBO



High temperature data loggers, for sterilisation and pasteurisation processes

SterilDisk (140°C) and **PasteurDisk** (100°C) data loggers make easy the monitoring of temperature during sterilization and pasteurization and are the solution for any food producer, pharmaceutical company and laboratory of analysis and more.

System

The loggers can be used with two different software:

- **SPD**, for quick and simple monitoring: start the devices, do your mission, download data and analyse;
- **TS Manager**, for deep analysis and control: a **FDA 21 CFR Part 11 compatible software** with multi-level access and reports according to regulations. Designed for autoclave validation, from pharma/medical to laboratories, dentists and food.

Versions

There are three versions available:

- **Standard**: simple disk;
- **Probe**: disk with external sensor of 10 mm, 30 mm, 50 mm length, 4 mm diameter; the 50 mm has a threaded part to screw the probe on different surfaces. High response time;
- **Jumbo**: **bigger memory and extended battery life**, with external sensor of 20, 60, 125 mm length (or on demand), 3 mm diameter or 100 mm length and 5 mm diameter. **Higher response time**.

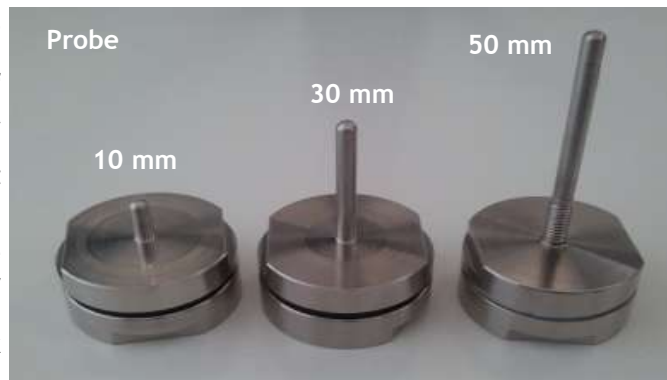
All the loggers are connected to the PC by means of the USB DiskInterface (Jumbo uses a special adapter).



Standard

Different probe lengths give you the possibility to always **reach the core of your product** and get a fast response time, important for short processes.

Use several of these loggers to map your autoclave or pasteurisation tunnel and then to check every process you make.

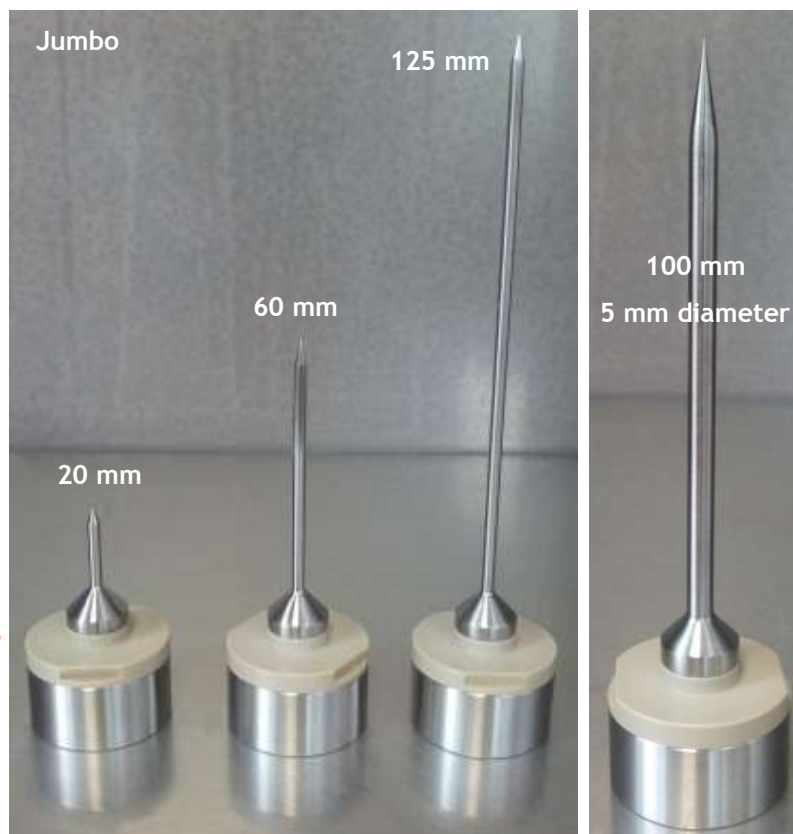


Applications

- Temperature monitoring of sterilisation and pasteurisation processes.
- Autoclave validation according to 21 CFR Part 11 regulations.

Pros

- High accuracy and precision.
- Long battery life and with the Jumbo version is even extended.
- Completely food grade and submersible.
- Printed reports compliant with health regulations and ISO (data are not editable in the software).
- F0 and PU calculation.
- Provided with **calibration certificate** SIT traceable.
- Can be fixed to food package and surfaces with the **Fastening System** (only for Probe 50 mm and Jumbo versions).
- **Can be calibrated for low temperatures (-40°C).**
- **BATTERY IS USER REPLACEABLE.**



Fields of application



Healthcare



Pharma



Dentists



Food



Laboratory

Interface Communication

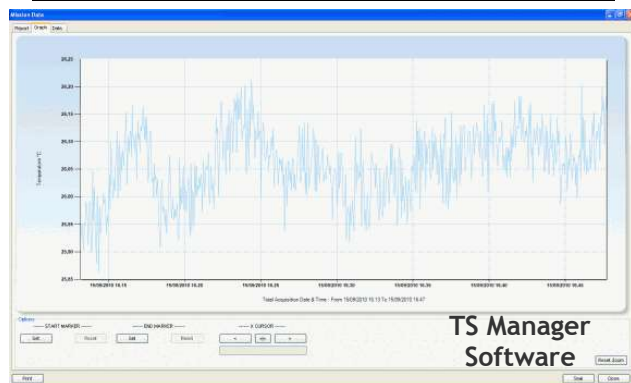
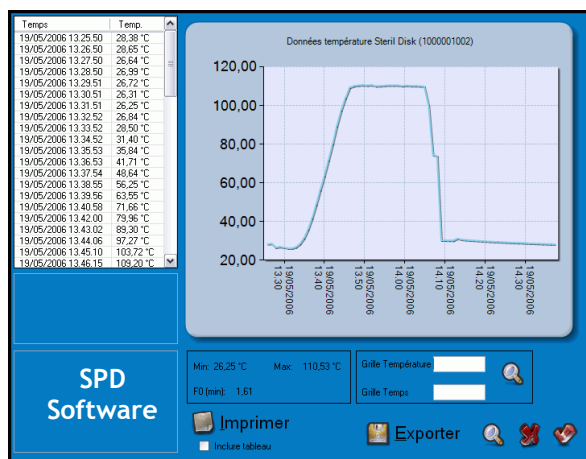
USB

Technical Data

Dimensions Standard/Probe	18 hh X 36 diameter (mm) – Probe: 10, 30, 50 hh X 4 diameter (mm)
Dimensions Jumbo	22 + 13 probe base hh X 35 diameter (mm) – probes: 20, 60, 120 hh or on demand X 3 diameter (mm) or 100 hh X 5 diameter (mm); flexible probe available too
Material Standard/Probe	Stainless steel AISI316L (completely Food Grade)
Material Jumbo	Stainless steel AISI316L and Peek (completely Food Grade)
Temperature range	PasteurDisk: 0 °C ÷ +100 °C (up to 10 bar) – SterilDisk: 0 °C ÷ +140 °C (up to 10 bar)
Temperature resolution	0,04 °C
Temperature accuracy	± 0,3 °C
Number of acquisitions Standard/Probe	15.000
Number of acquisitions Jumbo	120.000
Acquisition rate	From 1 every second up
Battery life Standard/Probe	2 years with standard use (user replaceable)
Battery life Jumbo	4 years with standard use (user replaceable)
Protection degree	IP68
Communications	USB DiskInterface (+adapter for Jumbo only)

Software

Operating Systems	Windows 2000, XP, Vista, 7 (32 and 64 bit)
Data management SPD	missions sorted by start date and logger serial number
Data management TS Manager	missions filtered by start date, logger type, serial number, customer/instrument validated and much more
Data display	Graph (with zoom) and table (exportable into Excel) and report of all the data printing
Multi graph display	SPD: <u>two or more missions can displayed on a single graph</u>
F0 and parameters	Automatically <u>calculates the F0</u> and the Z and N parameters of the formula can be set
Languages	SPD: Italian, English, French, Spanish, German TS Manager: English



PasteurDisk Jumbo and SterilDisk Jumbo can come also with a **special flexible external probe**. The length of the stainless steel part of the probe is the same of the standard Jumbo probes (20, 60, 125 mm) and there is an extra teflon flexible cable that connects it to the main body of the device. The whole device is IP68 and has the same features of the normal probes. With the flexible probes it is possible to use these devices also in places where there is not enough space to put the logger on or inside the the product's package.



Tecnosoft srl
Via Luigi Galvani, 4, 20068, Peschiera Borromeo (MI) - ITALY
Tel +39 0226922888 - Fax +39 0226922875
www.tecnosoft.eu - info@tecnosoft.eu
UNI EN ISO 9001:2008 Certified for Software development

Product Code:
ts01pd/c/p/p10/p30
ts01sp/c/p/p10/p30
ts01pdj1/2/3/d/5
ts01sdj1/2/3/d/5